

ARE HAWAII'S GRADUATES EMPLOYED IN TODAY'S WORKFORCE?

Every year, thousands of University of Hawaii System graduates enter the workforce with hard-earned degrees and high hopes for their employment possibilities. But are they getting jobs in Hawaii industries related to their fields of study? The Hawaii Data eXchange Partnership (Hawaii DXP) analyzed data from its partners to better understand this question and others.

ABOUT THE DATA

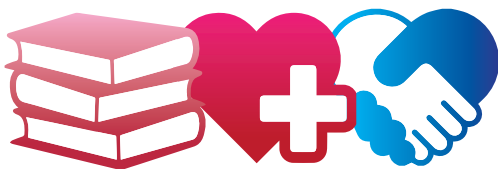
For this issue brief, the data sources were the University of Hawaii (UH) and the Department of Labor and Industrial Relations (DLIR). UH data (enrollment figures, majors, and degrees/certificates) was cross-referenced with DLIR's Unemployment Insurance database, which tracks earnings of workers in Hawaii.

The UH population included Hawaii residents who graduated from any of the 10 campuses during the fall 2008 through summer 2012 period, who were not enrolled at UH in subsequent terms.

WORKFORCE LANDSCAPE

Through the years, Hawaii's economy has centered on agriculture, military support, tourism, and construction. To diversify the state's economy, efforts to increase science, technology, engineering, and math (STEM) related industries have been at the forefront in recent years.

Hawaii's Top Three Employment Industries in 2012*



**Education, Health,
and Social Services**

19.2%



**Accommodations, Entertainment,
and Food Services**

16.2%



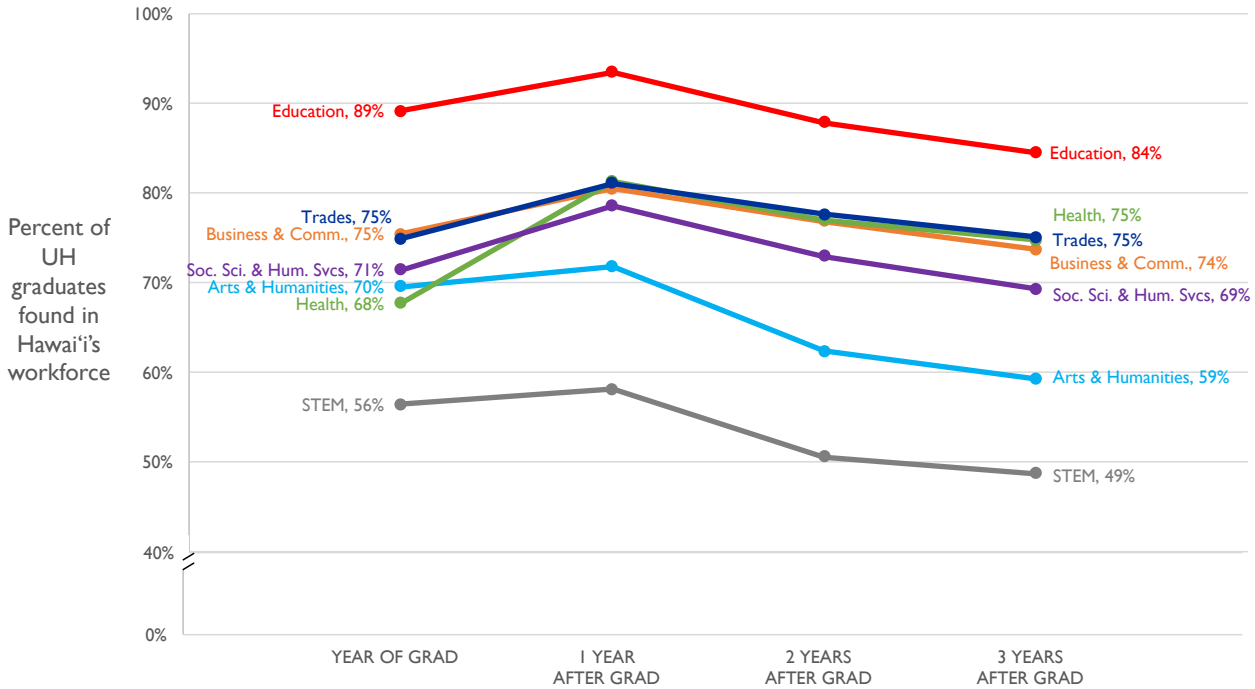
Retail Trade

12.4%

*STEM is not reported as an industry category
Source: 2013 Hawaii State Data Book

UH GRADUATES BY MAJOR IN HAWAII'S WORKFORCE

Are UH graduates getting degrees related to Hawaii's top employment industries? And, perhaps more importantly, are they staying in Hawaii? According to the data, most UH graduates entered and remained in Hawaii's workforce three years after graduation.



STEM JOBS ARE HARD TO COME BY

All majors experienced decline in employment three years after graduation. However, those with STEM-related degrees fared the worst, with less than half of graduates still found working in Hawaii.

A January 2017 report by WalletHub ranked Honolulu near the bottom in several metrics for working STEM professionals.

WalletHub STEM Metric	Honolulu's Ranking*
STEM-Friendly Environment	69 th
Job Openings for Graduates	71 st
Demand for STEM Jobs by 2020	79 th
STEM Employment Growth	85 th
Professional Opportunities	99 th
Annual Median Wage	100 th

*Ranking in 100 largest metro areas

MORE DATA, MORE INFORMATION

In summary, Hawaii DXP's data analysis concludes that UH students who major in education, healthcare, and business, as well as those who hold certificates or degrees in the trades, are most likely to enter and stay in Hawaii's workforce following graduation.

Hawaii DXP's ability to analyze educational and workforce data over multiple years allows for a longitudinal view to understand and improve student and workforce outcomes. As additional data becomes available, Hawaii DXP will be able to answer other questions and identify areas for improvement to help:

- Close achievement gaps
- Reduce barriers to college
- Align training and education to workforce needs

Hawaii DXP is a division of Hawaii P-20 Partnerships for Education. Our partners have come together to share education and workforce data for the development of a statewide longitudinal data system. Hawaii DXP serves as custodian of that system and analyzes the data to inform policy- and decision-making to improve student and workforce outcomes for the benefit of our community.

WHAT QUESTIONS CAN HAWAII DXP HELP ANSWER FOR YOU?

CONTACT INFO:

Jean Osumi | josumi@hawaii.edu | www.hawaiidxp.org | www.p20hawaii.org



HAWAII P-20
Partnerships for Education